

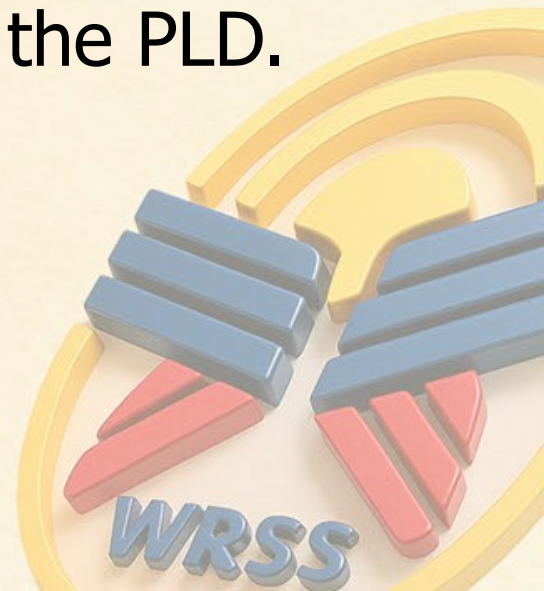


The Personal Learning Device (PLD) Initiative

Mr Nicholas Chua
Head of Department, ICT

The National Digital Literacy Programme (NDLP)

- The NDLP was launched in March 2020 to help students strengthen their digital literacy and acquire digital skills needed to navigate an increasingly digitalised world.
- Under the NDLP, every secondary school student will own a school-prescribed Personal Learning Device (PLD). Students may use funds from their Edusave Account to pay for the PLD.



Intended Outcomes of the PLD Initiative

The use of the PLD for teaching and learning aims to:



**Support the Development
of Digital Literacy**



**Support Self-Directed and
Collaborative Learning**



**Enhance Teaching and
Learning**



PLD Use in WRSS



Supporting Students in the Safe and Effective Use of the Devices

- The school has measures in place to enable a safer digital environment for learning with the use of PLDs, e.g.
 - School rules on digital device use
 - Classroom management and routines
 - Cyber Wellness Education in CCE
 - Partnering parents/guardians to support students in their use of technology for learning
 - Device Management Application (DMA) to support a safer digital environment for learning



School Rules on Digital Device Use



No Handphone Policy



Fully Charged PLD



Part of Curriculum

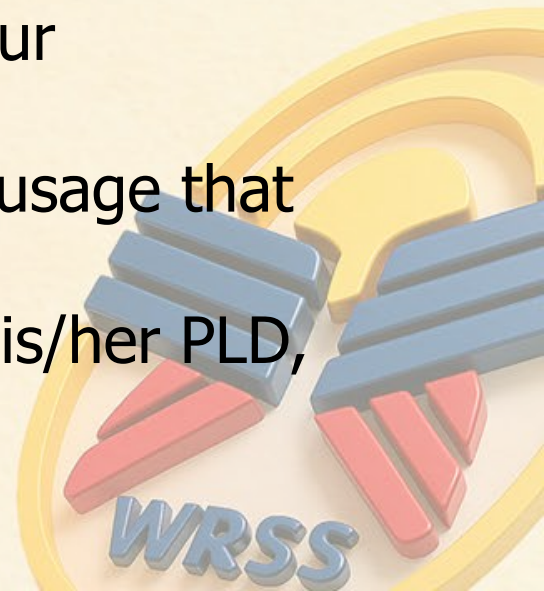
Cyberwellness in WRSS

- MOE has made significant changes to the Character and Citizenship Education (CCE) curriculum. Cyber Wellness lessons will feature significantly in these lessons.
- Throughout their Secondary School education, students will learn about:
 - Balanced use and self control
 - Cyber bullying and Upstanding
 - How to be a positive influence online
 - How to handle online falsehoods
 - How to manage social media (peer influence, emotions, echo chambers)
 - Online relationship and Online safety (grooming, self disclosure)
 - To respect intellectual property rights



Parents'/Guardians' Role

- We would like to partner parents/guardians so that students are well supported in their use of technology for learning.
- As parents/guardians, you can help in the following ways:
 - Model good digital habits for your child/ward e.g. parents/guardians not using devices during family meals.
 - Know your child/ward well, and have conversations with your child/ward about safe and responsible use of technology.
 - Discuss and come up with ground rules for internet/device usage that both your child/ward and you can agree with.
 - Encourage your child/ward to use productivity tools using his/her PLD, to organise information and simplify tasks for efficiency.



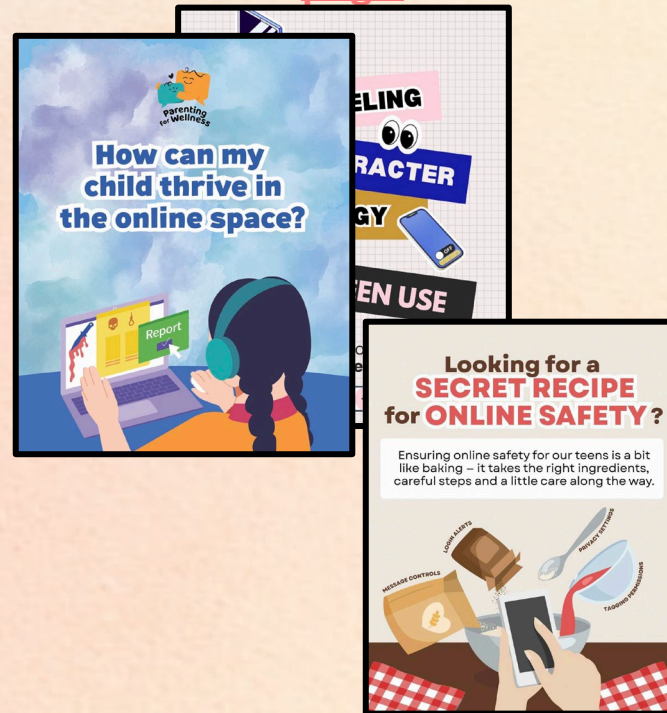
Supporting Resources

Here are some resources that you can refer to:

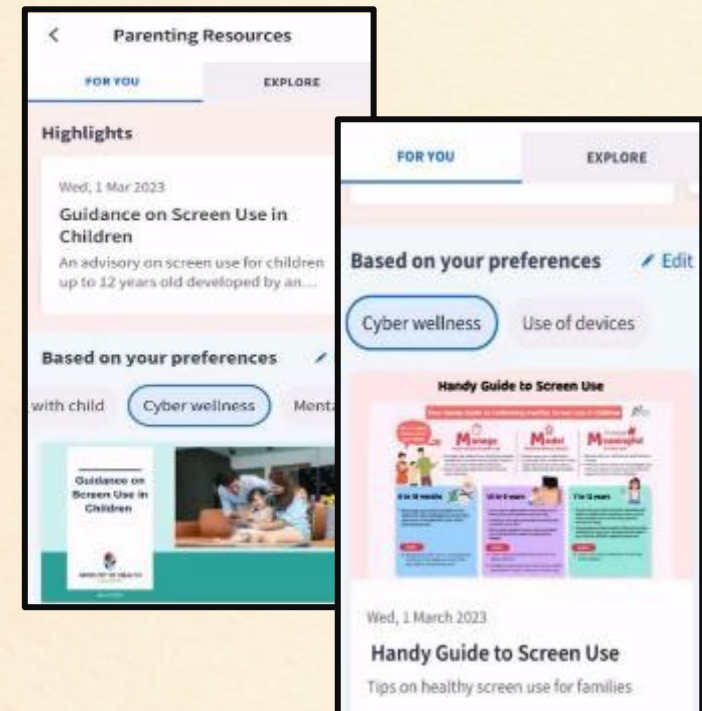
A. Parent Kit



B. Bite-sized tips and advice via Parentingwith.MOEsg Instagram page



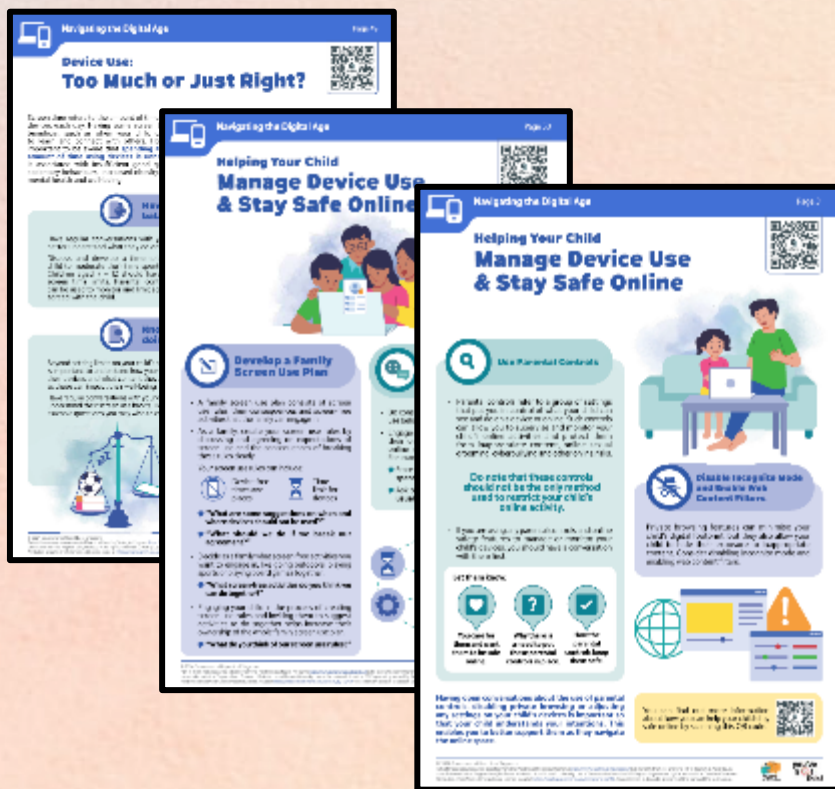
C. Resources from MOE and other agencies (available on resources repository in Parents Gateway)



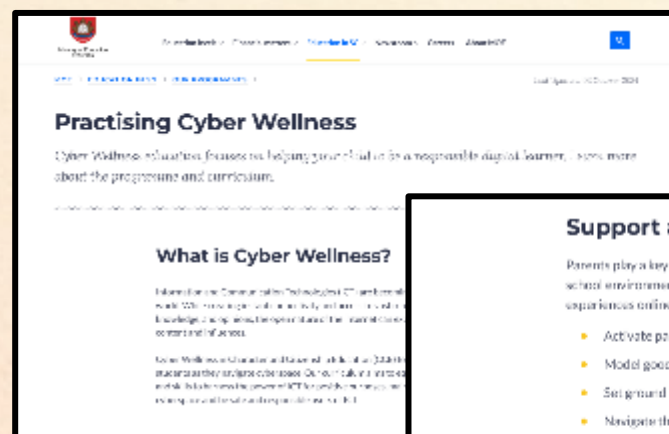
Supporting Resources

D. Parenting for Wellness Toolbox for Parents and Parenting for Wellness Website on Parent Hub

The Parenting for Wellness initiative provides bite-sized resources (practical tips and strategies) on building strong parent-child relationships, supporting your child's mental well-being and parenting in the digital age.



E. More resources are available via the MOE Cyber Wellness Webpage



Support at home

Parents play a key role in their children's growth. Students benefit the most when the home and school environments are aligned to each other. To help your child stay safe and have positive experiences online, you can:

- Activate parental controls on your home devices.
- Model good digital habits for your child.
- Set ground rules for internet use.
- Navigate the internet together to understand their usage.

Resources

Learn more about how to keep your child safe online through these resources.

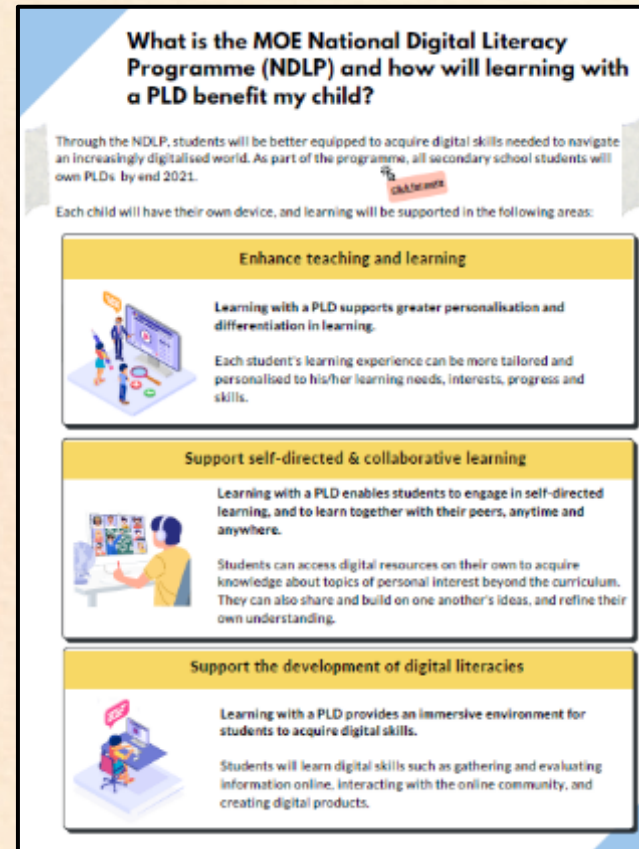
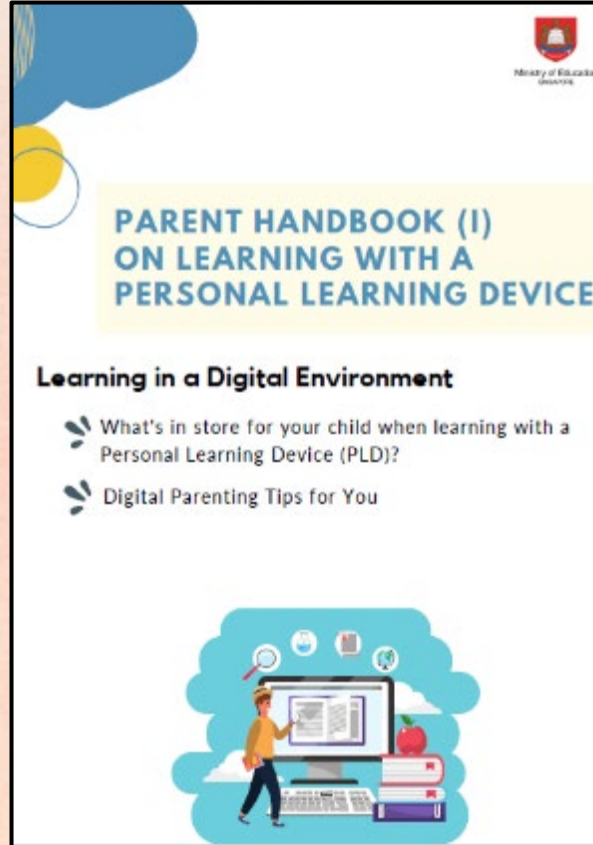
From MOE

- Children and their devices: How to strike the right balance
- Future tense: Keeping kids grounded while tech turns the world upside down
- What does a student's AI-enhanced day look like? Here's a peek
- Are you struggling with your child's excessive device use?
- 7 things every parent can do to keep kids cyber safe: A tech dad's special
- The future looks real? Why this dad isn't afraid of the rise of AI
- Keeping kids safe online – A community effort
- Parent Kit – Raising A Digitally Smart Child
- Parent Kit – Experiencing Blended Learning with Our Children
- Recording of Instagram Live – Raising Digitally Smart Kids

Supporting Resources

F. Parent Handbooks (I) and (II) on Learning with a Personal Learning Device

These Handbooks provide tips on supporting your child in the use of PLDs for learning and are shared via the PG notification together with the letter to purchase PLDs.



DMA Installation

- The iPad Device Management Application (DMA) solution, Jamf, will be installed on all students' devices to provide a safe learning experience for students. The DMA will be funded by MOE. The DMA will be funded by MOE.
- DMA will be installed after the collection of the device. Students will be guided on the installation.
- The installation of DMA applies to both devices purchased through the school and any student-owned devices that parents/guardians opt for the student to use in lieu of the school-prescribed PLD.
- The DMA will be uninstalled from the device when students graduate or leave the school.



In-School DMA Settings (Default)

Schools will determine DMA settings for **in-school use**. As a default, these settings will continue to be in place after school as well:

- MOE and the school will set the level of web content filtering, including filtering objectionable content or content that may not be conducive to teaching and learning (e.g. social media, pornography, gambling, or websites containing extremist content).
- School hours is defined to be from **6.30 a.m. to 6 p.m.** and after school hours would be from **6 p.m. to 10.30 p.m.**. The device will shut down at **10.30 p.m.** by default.
- The school will determine the applications and programs to be installed to support teaching and learning.



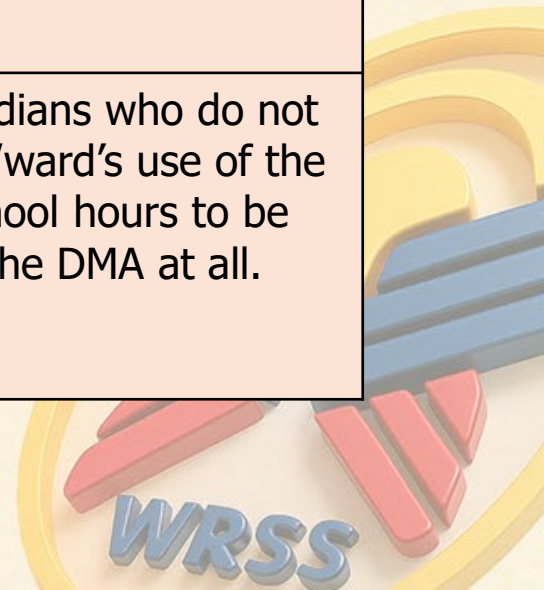
After-School DMA Parent Options

1. After-School DMA Parent Options provide parents with the flexibility in managing your child's/ward's use of PLD after school hours.
2. The following tables outline the different levels of restrictions, controls, and monitoring for each After-School DMA Parent Option.

Default	Option A	Option B
In-school DMA settings will continue after school hours	DMA settings can be modified by Parents/Guardians after school hours	DMA will be inactive* after school hours
For parents/guardians who want their child's/ward's use of the device to be restricted only to teaching and learning, and prefer to leave it to the school to decide on DMA settings after school hours.	For parents/guardians who prefer to take charge of the level of restrictions for their child's/ward's use of the device after school hours regulated by the DMA.	For parents/guardians who do not want their child's/ward's use of the device after school hours to be regulated by the DMA at all.

*No data will be collected after school hours when the DMA is inactive.

- Having default school settings continue after school hours is the best option for parents/guardians who prefer not to, or do not feel ready to manage their child's/ward's device use on their own.
- Parents/guardians can request to change their choice of DMA settings, which is the existing practice.



After-School DMA Parent Options

	Default Setting (This will apply if no Alternative Setting is chosen)	Alternative Setting: Option A (DMA settings can be modified from the Default settings in place)	Alternative Setting: Option B (DMA will be inactive only after school hours)
Protect students from objectionable content	Web content filtering will include, but not limited to the following categories: <ul style="list-style-type: none">• Violent/extremist content• Sexual/pornographic content• Gambling-related content• Suicide/self-harm content• Cyberbullying content• Content endangering public health	Parents/Guardians will be able to include additional web content filtering using the Jamf Parent app. However, parents/guardians cannot allow access to web content that is filtered out under the Default Setting.	No content filtering at all after school hours.

After-School DMA Parent Options

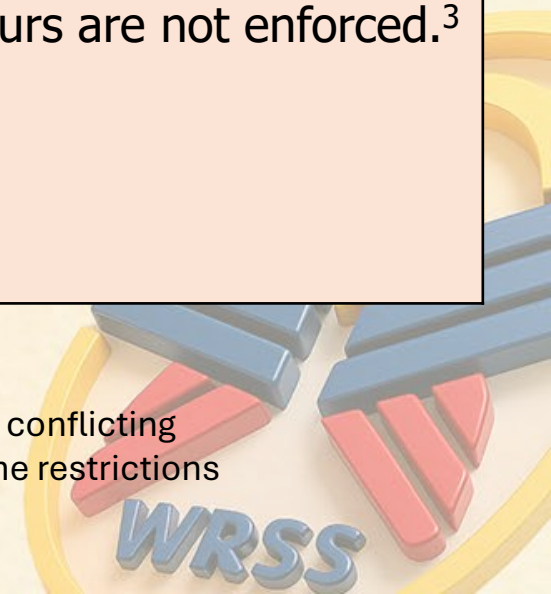
	Default Setting (This will apply if no Alternative Setting is chosen)	Alternative Setting: Option A (DMA settings can be modified from the Default settings in place)	Alternative Setting: Option B (DMA will be inactive only after school hours)
Reduce distractions from learning through control of applications	Parents/Guardians will <u>not</u> be able to install additional applications.	<p>Parents/Guardians will be able to install additional applications after school hours by signing in to the Apple App Store using their personal Apple Accounts.</p> <p>Applications installed by parents/guardians/students will not be accessible during school hours.</p> <p>Parents/Guardians can limit after school access to applications that they install on the PLD.</p>	<p>Parents/Guardians/Students will be able to install additional applications after school hours by signing in to the Apple App Store using their personal Apple Accounts.</p> <p>Applications installed by parents/guardians/students will not be accessible during school hours.</p>

After-School DMA Parent Options

	Default Setting (This will apply if no Alternative Setting is chosen)	Alternative Setting: Option A (DMA settings can be modified from the Default settings in place)	Alternative Setting: Option B (DMA will be inactive only after school hours)
Limit screen time	The school will define the specific hours during which the student can use the PLD.	<p>Parents/Guardians can modify the amount of screen time for their child/ward by setting the PLD sleep hours to any time between 6pm and 10.30pm. This can be done on the Jamf Parent Application. ²</p> <p>Parents/Guardians can determine the duration of use of specified applications.</p>	<p>No limitation on duration of screen time. after school hours.</p> <p>Sleep hours are not enforced.³</p>

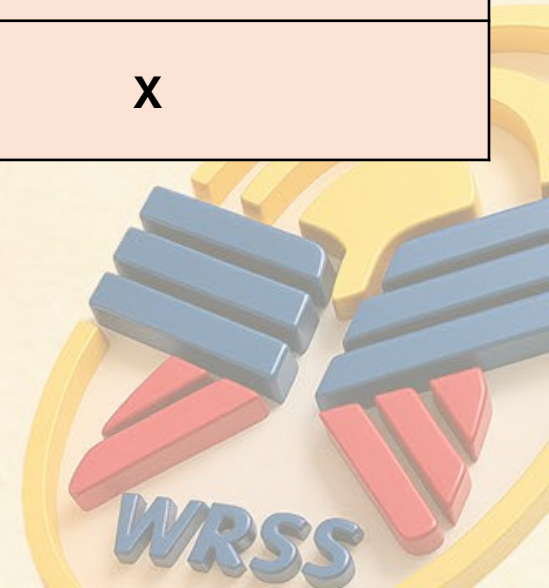
² During school hours, the screen time limits set by the school will override parents/guardians' settings.

³ It is not recommended to install other parental controls (e.g. Apple's Family Sharing/Screen Time) as this could result in conflicting settings between school and parent controls. It may result in unexpected issues where some controls such as screen time restrictions may not work as intended.



After-School DMA Parent Options

	Default Setting (This will apply if no Alternative Setting is chosen)	Alternative Setting: Option A (DMA settings can be modified from the Default settings in place)	Alternative Setting: Option B (DMA will be inactive only after school hours)
Monitor students' cyber activities	Parents/Guardians will not be able to track their child's/ward's web browsing history due to Apple's Privacy Policy.		
Parent Account	X	✓	X



After-School DMA Parent Options

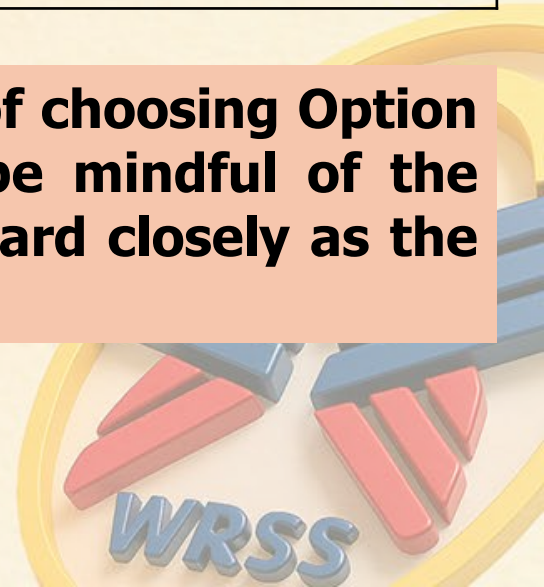
In Summary,

In **Default Setting**, all safeguards will be in place to help prevent excessive and / or inappropriate use of the device.

Option A or B will mean,

- 1) Your child / ward may be able to download apps he / she likes
- 2) Your child / ward may ask you to extend device usage time, i.e., it will likely affect sleep hours
- 3) You will not be able to monitor your child's / ward's usage history.

We advise that parents / guardians retain the Default setting instead of choosing Option A or B. Should parents / guardians choose Option A or B, please be mindful of the changes made to DMA settings and proactively monitor your child / ward closely as the safeguards provided in Default setting will be affected.



Data Collected by the DMA

- The DMA does NOT collect any of the following data:
 - Login IDs and passwords entered into websites or into any applications
 - Actions performed (e.g. posts, online comments, items added to a shopping cart, etc.) when visiting websites and using apps
 - Documents and photos stored in the PLDs
 - PLD location
 - Webcam videos and microphone recordings



WRSS' PLD of Choice



iPad 11-inch (A16)
(128GB)
Enhanced Bundle

- Accessories
 - Apple Pencil (USB-C) [4 Year warranty]
 - Logitech Rugged Combo 4 iPad 11-Inch A16/10.9-Inch 10 GEN [4 Year Warranty]
- Insurance and Warranty
 - 4-year warranty
 - 4-year insurance (which includes 2 repairs or 1 replacement claim)
- Total cost of the bundle with GST: **\$829.30**

Please note that the price of the PLD Bundle may appear to be higher than similar models on the retail market as the price of those devices usually does not include extended warranty and insurance coverage.



Insurance Coverage

- The package includes:

Insurance Coverage

- Fire
- Lightning
- Power Surges
- Accidental e.g water spillage, drop etc
- Theft due to forcible entry
- Robbery

*** Accidental loss will not be covered by insurance.**

Claimable

2 repairs or 1 replacement claim
(4-year insurance)



Technical Support



School ICT Service Centre
Block D Level 1

asiaPAC from 

Service Centres

AsiaPac Apple Service Centre
QCD Technology @ Westgate
Apple Retail Store @ Jewel Changi Airport
Apple Retail Store @ Orchard Road
Apple Marina Bay Sands



Funding Support for Singapore Citizen (SC) Students

- **The cost of the device bundle can be paid using your child's/ward's Edusave account**, after setting aside provision for payment of miscellaneous fees.
- To ensure the affordability of devices, MOE has provided Edusave top-ups from 2020 to 2023 to all eligible Singaporean students in primary and secondary schools. In 2025, MOE has provided a \$500 Edusave top-up for students aged 13-16 years old.
- This is on top of the annual \$290 credited into the Edusave account for Secondary School students and \$230 for Primary School students.



Funding Support for Singapore Citizen (SC) Students

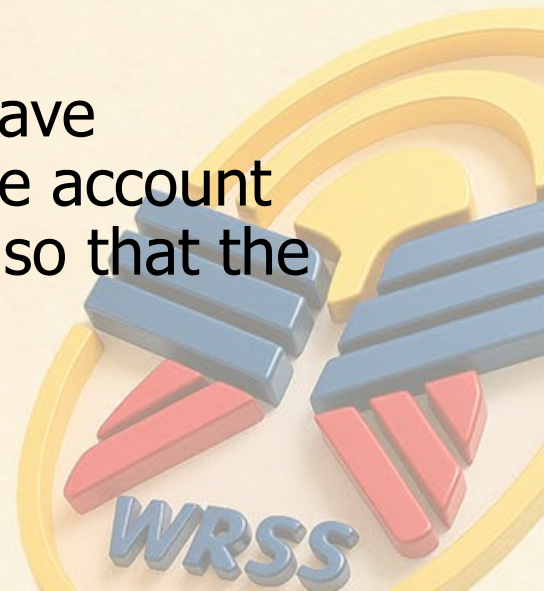
- For SC students who are on MOE Financial Assistance Scheme or whose family's monthly income meets the following criteria:

Gross Household Income (GHI) \leq \$4,000, or

Per Capita Income (PCI) \leq \$1,000

MOE will subsidise 50% of device bundle cost or \$350, whichever is lower.

- The remaining amount will be payable from the students' Edusave account. If there is insufficient balance in the students' Edusave account for the remaining amount, MOE will provide additional subsidy so that the cash out-of-pocket (OOP) is \$0.



Funding Scenario: Student A (SC)



iPad 11-inch (A16)
(128GB)
Enhanced Bundle

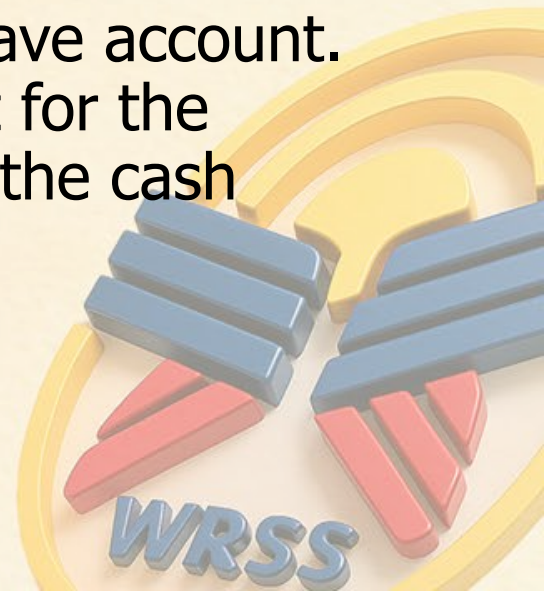
Student A (SC on MOE FAS) GHI ≤ \$4,000 or PCI ≤ \$1,000	
Device Bundle Cost	\$829.30
Student Subsidy (50%)	\$350
Available Edusave Balance <i>(After setting aside for misc fees)</i>	\$200.00 before deduction \$200.00 will be deducted
Additional Subsidy	\$279.30
Cash Out-of-pocket	\$0.00

For more details on financial assistance, please approach the school.
Each student will subsequently receive a personalised bill.



Funding Support for Singapore Citizen (SC) Students

- For SC students whose family's monthly income is:
 $\$4,000 < \text{Gross Household Income (GHI)} \leq \$5,500$, or
 $\$1,000 < \text{Per Capita Income (PCI)} \leq \$1,375$
MOE will subsidise 30% of device bundle cost or \$200, whichever is lower.
- The remaining amount will be payable from the students' Edusave account. If there is insufficient balance in the students' Edusave account for the remaining amount, MOE will provide additional subsidy so that the cash out-of-pocket (OOP) is not more than \$50.



Funding Scenario: Student B (SC)



iPad 11-inch (A16)
(128GB)
Enhanced Bundle

Student B (Non MOE-FAS SC from lower income family) \$4,000 < GHI ≤ \$5,500 or \$1,000 < PCI ≤ \$1,375	
Device Bundle Cost	\$829.30
Student Subsidy (30%)	\$200
Available Edusave Balance <i>(After setting aside for misc fees)</i>	\$200.00 before deduction \$200.00 will be deducted
Additional Subsidy	\$379.30
Cash Out-of-pocket	\$50.00

For more details on financial assistance, please approach the school.
Each student will subsequently receive a personalised bill.



Funding Support for Singapore Citizen (SC) Students

- Subsidies will not be provided for SC students whose family's monthly:
 - Gross Household Income (GHI) is above \$5,500 or
 - Per Capita Income (PCI)# is above \$1,375.
- Parents/Guardians can use their child's/ward's Edusave or cash to defray the device bundle cost.

#PCI is Gross Household Income divided by the number of household members.



Funding Scenario: Student C (SC)



iPad 11-inch (A16)
(128GB)
Enhanced Bundle

Student C (Not Eligible for Subsidy) GHI > \$5,500 or PCI > \$1,375	
Device Bundle Cost	\$829.30
Available Edusave Balance <i>(After setting aside for misc fees)</i>	\$200.00 before deduction \$200.00 will be deducted
Cash Out-of-pocket	\$629.30

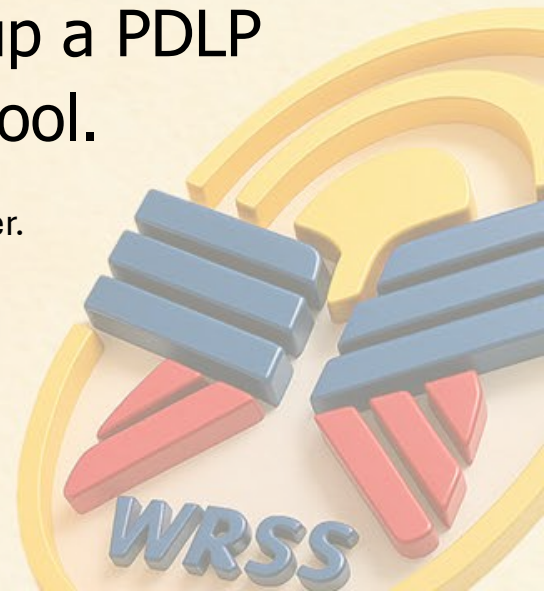
For more details on financial assistance, please approach the school.
Each student will subsequently receive a personalised bill.



Parental Consent for Procurement

1. Parents can access the **Parental Consent for the Purchase of Personal Learning Device (PLD)** via a Parents Gateway (PG) notification* that has been sent to you on **9 Jan 2026**.
2. Parents/Guardians who want to use Edusave funds for the PLD (for Singapore Citizens students only), please access: <https://go.gov.sg/edusaveformsgso> by **16 Jan 2026** to set up a PDLP Standing Order as this was not applicable during primary school.

* Parents/Guardians without access to PG can request for the hardcopy letter via your child's/ward's form teacher.



Edusave Standing Order



QR Code for Edusave
Standing Order

5. I wish to use my child's/ward's Edusave account for payment of approved fees. (optional)



Yes

6. I wish to use my child's/ward's Edusave account for payment of local and overseas enrichment programme charges. (optional)



Yes

7. I wish to use my child's/ward's Edusave account for payment of learning device under PDLP (optional)

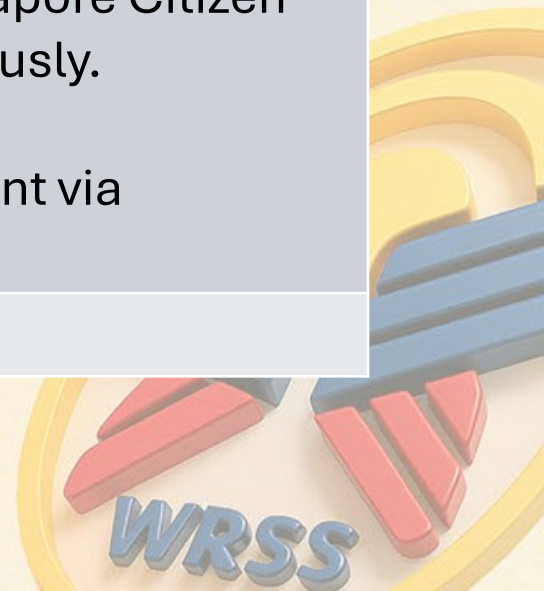


Yes



For Singapore Citizens (SC) Students

Time Frame	Activity
By 16 Jan 2026	<p>1. Submit:</p> <ol style="list-style-type: none">consent to PLD purchase via in the PG notification which includes the following:<ul style="list-style-type: none">Intent to Purchase Personal Learning Device (PLD);Authorisation Form for the Collection of PLDthe Standing Order (SO) for the use of Edusave Account via https://go.gov.sg/edusaveformsgso (for Singapore Citizen students only) if you have not done so previously. <p>Parents without access to PG can submit their consent via hardcopy.</p>
Early Term 2 (est.)	Collection of devices by students



For Permanent Residents / International Students

Time Frame	Activity
By 16 Jan 2026	<ol style="list-style-type: none">1. Submit consent to PLD purchase which includes the following:<ul style="list-style-type: none">• Intent to Purchase Personal Learning Device (PLD);• Authorisation Form for the Collection of PLD• Students will be given the form via their FTs• Students to return signed forms to their FTs
By end Feb 2026	Parent/Guardian to make payment
Early Term 2 (est.)	Collection of devices by students



Collection of Devices

Your child/ward will be collecting his/her device in school **from early Term 2 (est.)**.

If you would like to personally/have another adult to verify the condition of the device during collection with your child/ward:

- You may arrange to collect the device **at the vendor's service/collection centre*** or appoint an adult proxy to do so.
- Your child/ward would need to bring the device to school and arrange for the school's IT department to install the DMA.

Please approach the school for further advice or clarification if you would like to make this arrangement.

*Parents/Guardians (or adult proxy) will **not** be able to collect the PLD from the school.



FAQ: Can I use my own iPad?

- Students will have to bring the iPads to school for the ICT team to check on the compatibility with the required specifications.
- If the iPad is compatible, the DMA must be installed in the device.



Important Contacts / Helplines

To access / find out more about...	Contact / Helpline
This deck of slides	https://www.woodlandsringsec.moe.edu.sg/
Edusave balance	6260 0777
Financial assistance	Mr Ershah wrss@moe.edu.sg
Device queries	Mr Nicholas Chua chua_teck_kwan_nicholas@moe.edu.sg +65 6049 1462 (Whatsapp only)



Thank You

